

15th Annual

# AIDS WALK

New Hope +  
Lambertville

2014 September 21

benefiting FACT Bucks County

## About FACT Bucks County

Established in 1992, FACT Bucks County is an all volunteer non-profit organization dedicated to providing financial assistance as a point of last resort to those individuals living with HIV/AIDS who reside in Bucks, Hunterdon and Mercer Counties in order to maintain independence and quality of life. FACT Bucks County is also dedicated to reducing the spread of HIV through educational grants to local community based organizations. Through our aggressive fundraising efforts, we are able to provide essential funding to people who have nowhere else to turn for such things as medication, utility bills, rent and mortgage payments, transportation, and other personal needs.

## [FACT] Fighting AIDS Continuously Together

Proud member of the New Hope Chamber of Commerce

Thanks to all of our past sponsors



A Wonderful Couple  
FROM CARVERSVILLE

Gratz Gallery  
A CONSERVATION STUDIO

## WHAT CAN YOU DO?

### MOVE!

#### WALK or RUN (& bring your four legged pals too!)

Our scenic 10K (6.2 miles) will take us from the New Hope/Solebury High School, crossing over the bridge to Lambertville and onto the canal path North to Stockton, crossing over the bridge to Center Bridge and continuing on the canal path South, finishing back at the high school in New Hope.

### TEAM UP!

#### FORM a TEAM!

Walk with a group to increase the fun and fundraising. Your co-workers, friends, and family members will want to join in on the fun. It's easy to start a team—just choose a team captain and a team name and you'll be ready to go. Together you can raise even more money if your employers have matching gifts programs that double (or even triple) your fundraising. Exciting prizes will be awarded to the individuals and teams that raise the most money.

### HELP OUT!

#### VOLUNTEER!

The generous support of volunteers is crucial. All pre-registered volunteers who assist the day of the event will receive a **2014 New Hope/Lambertville AIDS Walk T-shirt!** We will contact you soon with details.

### GIVE!

#### DONATE!

Consider donating item(s) to be used to recognize walkers and for raffle prizes.

## PROVIDE! RAISE MONEY!

### AIDSWALK 2014 T-Shirt for \$100 in collected pledges

For every \$50 you raise, you will receive a raffle ticket for the Grand Prize drawing. To qualify for the shirts and the drawing, all monies collected must be turned in the day of the event. Contact us with the information below, or call our Hotline at 215.862.3325 to leave a message—we'll be in touch!

☐ I want to Volunteer ☐ I have an item(s) to donate

Name \_\_\_\_\_

Business/Organization \_\_\_\_\_

Address \_\_\_\_\_

City/State/Zip \_\_\_\_\_

Phone \_\_\_\_\_

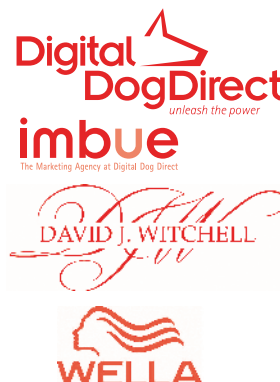
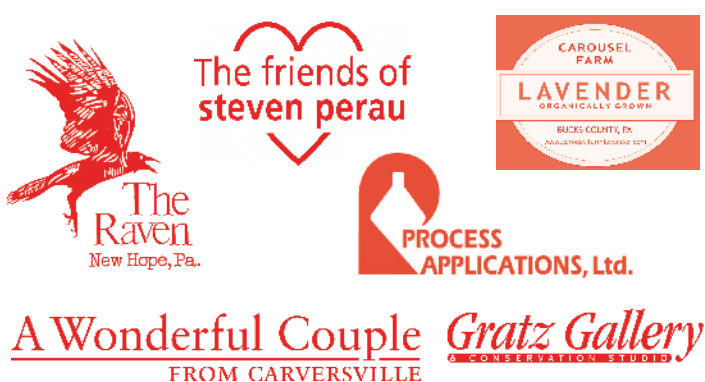
E-Mail \_\_\_\_\_

## THANK YOU!

### THANK YOU!

Our ability to continue to act as an effective lifeline of support for those affected by HIV and AIDS depends on support from people like you who recognize the devastating impact of this disease on our community. Thank you for your continued support!

[www.factbuckscounty.org](http://www.factbuckscounty.org)



Family Services Association of Bucks County • First National Bank & Trust Company of Newtown  
Fisherman's Mark • Fred Beans Family Of Dealerships • Giant Food Stores • Isaac Newton's • Jenei & Cohen, P.C.  
Renny Reynolds & Jack Staub • Saint Philip's Episcopal Church • Team Capital Bank • The Living Earth

Bucks County Bank • Curtin & Heefner, L.L.P. • First American Title Insurance Co. • First Federal of Bucks County • Fulton Bank, N.A.  
Karla's Restaurant • Knobs 'N' Knockers • New Hope-Solebury Dental Associates • River Signs, LLC • Starbucks Coffee Company  
Trendi Financial Group • Tohickon Abstract • Topeo Galleries

**9 AM Registration** at New Hope-Solebury High School,  
located on route 179 (West Bridge Street) — about 1/2 mile  
west of the traffic light at Bridge and Main streets in downtown  
New Hope, or 1/2 mile east of the traffic light near Wawa.

## SPONSOR FORM



name of walker\_\_\_\_\_

walker's address\_\_\_\_\_

walker's phone no.\_\_\_\_\_

name of team\_\_\_\_\_

team captain\_\_\_\_\_

All checks should be made payable to FACT Bucks County. Walkers should collect  
their sponsors' donations in advance and bring them to the walk. Thanks!



	sponsor's name	sponsor's address	donation amount	amount collected
	Joe Sample	2000 Main Street, Anytown, New Jersey 20256	\$25.	\$25.
1				
2				
3				
4				
5				
6				
7				
8				
9				
10				
11				
12				
13				
14				
15				
16				
17				
18				
19				
20				
	our goal is for every walker to raise a minimum of \$200.		total	

make additional copies of this form as needed • all monies must be turned in to the registration area on the day of the  
event to qualify for prizes • keep a copy of this form for your records • **FACT now has on-line AIDS WALK pledging**  
**available, please go to our website for details on how you can raise more donations with First Giving**

☐ I am unable to participate but would like to make a donation of \_\_\_\_\_  
(please forward check to FACT Bucks County, P.O. Box 72, New Hope, PA 18938)

**Call 215.862.3325  
to volunteer or donate!**

FACT Bucks County  
P.O. Box 72  
New Hope, PA 18938  
tel. 215.862.3325  
[www.factbuckscounty.org](http://www.factbuckscounty.org)

